

Aspirus Keweenaw Physical Rehabilitation Center Houghton, MI



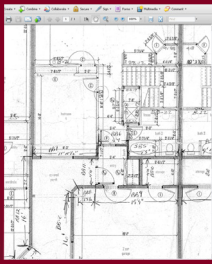
SPECIFICATIONS:

Size: 3,300 sq. ft.
Completion: October 2009
Contact: Mike Hauswirth
Phone: (906) 337-6521

PROJECT DESCRIPTION:

Serving as their new rehabilitation clinic in Houghton, Michigan, Aspirus Keweenaw looked to Division1 Design for design and engineering services. The Suite includes a reception and waiting area, staff offices, open work out area, a staff lounge and a simulated kitchen for therapy program. The suite is located within Ridgecrest Plaza which Division1 Design was also the project engineer.

ENGINEERED TO ENSURE SUCCESS



OUR SERVICES

Pre-Planning
Feasibility Studies
Site Analysis
Permitting
Surveying
Environmental Planning
Zoning

ARCHITECTURAL DESIGN

Master Planning
Conceptual Renderings
Design Drawings
Construction Drawings

ENGINEERING

Geotechnical
Structural
Civil

SUSTAINABLE DESIGN

Green building design as outlined by the U.S.
Green Building Council
Brownfield Assistance

CONSTRUCTION DOCUMENTATION

Drawings
Specifications
Proposal forms

CONSTRUCTION PROCEDURES

On-site QC Inspections
Submittal Review
As-built Drawings
Cost Review

PROPERTY SURVEYING

Land Divisions
- Lot Splits
- Site Condominiums
- Platted Subdivisions
ALTA Land Title Surveys
Mortgage Surveys
Legal Descriptions

DESIGN/ENGINEERING SURVEYS

Topographic Surveys
- Site Design
- As built locations
Floodplain & Wetland Mapping

STAKING

Site Grading
Underground Utilities
Building Layout
Roadway Staking
GPS Machine Control
- Terrain Model Preparation
- Orientation and initialization of machine control equipment to site