

Bayside Boardwalk

Dollar Bay, MI



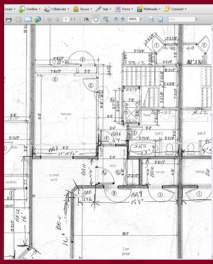
SPECIFICATIONS:

Size: 500 lineal feet
Project Cost: \$200,000
Completion: October 2008
Contact: Tim Aho
Phone: (906) 369-3708

PROJECT DESCRIPTION:

Originally designed to handle the mooring of coal barges and tugs, the Bayside Boardwalk is conversion of an industrial site into an upscale private residential boat mooring site and boardwalk. Division1 Design designed the new boardwalk reusing the existing steel sheet piling as the base for the new dock. Cantilevered cast-in-place concrete were designed for the boardwalk walking surface. Surface pedestals with service connections for power and water allow residents to maintain their boats on site. Decorative lighting high light the area. Design was coordinated with USACE and MDEQ requirements.

ENGINEERED TO ENSURE SUCCESS



OUR SERVICES

Pre-Planning
Feasibility Studies
Site Analysis
Permitting
Surveying
Environmental Planning
Zoning

ARCHITECTURAL DESIGN

Master Planning
Conceptual Renderings
Design Drawings
Construction Drawings

ENGINEERING

Geotechnical
Structural
Civil

SUSTAINABLE DESIGN

Green building design as
outlined by the U.S.
Green Building Council
Brownfield Assistance

CONSTRUCTION DOCUMENTATION

Drawings
Specifications
Proposal forms

CONSTRUCTION PROCEDURES

On-site QC Inspections
Submittal Review
As-built Drawings
Cost Review

PROPERTY SURVEYING

Land Divisions
- Lot Splits
- Site Condominiums
- Platted Subdivisions
ALTA Land Title Surveys
Mortgage Surveys
Legal Descriptions

DESIGN/ ENGINEERING SURVEYS

Topographic Surveys
- Site Design
- As built locations
Floodplain & Wetland
Mapping

STAKING

Site Grading
Underground Utilities
Building Layout
Roadway Staking
GPS Machine Control
- Terrain Model
Preparation
- Orientation and
initialization of machine
control equipment to site