

Calumet Electronics Addition

Calumet, MI



SPECIFICATIONS:

Size: 21,760 sq.ft.

Completion: May 2007

Contact: Steve Vairo

Phone: (906) 337-1305

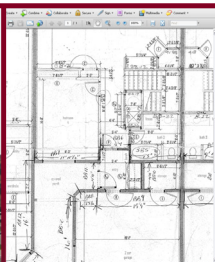
PROJECT DESCRIPTION:

Having worked with Calumet Electronics previously on smaller renovation projects, Division1 Design was selected to design the new manufacturing space constructed alongside existing facilities. With a concrete foundation and metal building, Division1 Design was able to provide Calumet Electronics with a large open floor plan that didn't lock the owner into a set layout for their equipment, allowing for space changes.

Project Includes:

- 21,760 sq. ft. metal building
- Reinforced concrete foundation
- Exterior designed to match existing facilities
- Loading dock design

ENGINEERED TO ENSURE SUCCESS



OUR SERVICES

Pre-Planning
Feasibility Studies
Site Analysis
Permitting
Surveying
Environmental Planning
Zoning

ARCHITECTURAL DESIGN

Master Planning
Conceptual Renderings
Design Drawings
Construction Drawings

ENGINEERING

Geotechnical
Structural
Civil

SUSTAINABLE DESIGN

Green building design as
outlined by the U.S.
Green Building Council
Brownfield Assistance

CONSTRUCTION DOCUMENTATION

Drawings
Specifications
Proposal forms

CONSTRUCTION PROCEDURES

On-site QC Inspections
Submittal Review
As-built Drawings
Cost Review

PROPERTY SURVEYING

Land Divisions
- Lot Splits
- Site Condominiums
- Platted Subdivisions
ALTA Land Title Surveys
Mortgage Surveys
Legal Descriptions

DESIGN/ ENGINEERING SURVEYS

Topographic Surveys
- Site Design
- As built locations
Floodplain & Wetland
Mapping

STAKING

Site Grading
Underground Utilities
Building Layout
Roadway Staking
GPS Machine Control
- Terrain Model
Preparation
- Orientation and
initialization of machine
control equipment to site