

Designed to Deliver Satisfaction

Goodwill Store Iron Mountain, MI



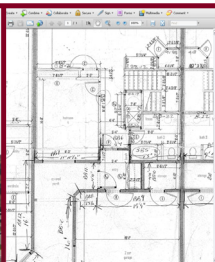
SPECIFICATIONS:

Size: 22,605 sq. ft.
Project Cost: \$4,150,000
Completion: April 2008
Contact: Jody Coopmans
Phone: (715) 732-0563

PROJECT DESCRIPTION:

Designed and built as part of the Keelridge Plaza in Iron Mountain, Michigan, Goodwill Industries worked with Division1 Design to develop a floor plan and system designs for their new retail space. Division1 provided design services not only for Goodwill's tenant buildout, but for the main shell as well, allowing for an easy incorporation of Goodwill's design requirements into the overall building construction documents. The building space provides for ample sales floor area, backroom storage, a loading dock for two trailers, and a covered carport for donation drop-offs.

ENGINEERED TO ENSURE SUCCESS



OUR SERVICES

Pre-Planning
Feasibility Studies
Site Analysis
Permitting
Surveying
Environmental Planning
Zoning

ARCHITECTURAL DESIGN

Master Planning
Conceptual Renderings
Design Drawings
Construction Drawings

ENGINEERING

Geotechnical
Structural
Civil

SUSTAINABLE DESIGN

Green building design as outlined by the U.S. Green Building Council
Brownfield Assistance

CONSTRUCTION DOCUMENTATION

Drawings
Specifications
Proposal forms

CONSTRUCTION PROCEDURES

On-site QC Inspections
Submittal Review
As-built Drawings
Cost Review

PROPERTY SURVEYING

Land Divisions
- Lot Splits
- Site Condominiums
- Platted Subdivisions
ALTA Land Title Surveys
Mortgage Surveys
Legal Descriptions

DESIGN/ENGINEERING SURVEYS

Topographic Surveys
- Site Design
- As built locations
Floodplain & Wetland Mapping

STAKING

Site Grading
Underground Utilities
Building Layout
Roadway Staking
GPS Machine Control
- Terrain Model Preparation
- Orientation and initialization of machine control equipment to site