

Rhythm Skateshop

Houghton, MI



SPECIFICATIONS:

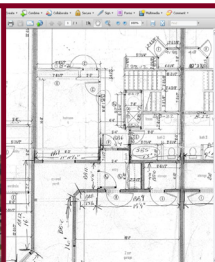
Project Cost: \$105,000

Completion: May 2007

PROJECT DESCRIPTION:

Built in the early 1900s, the Dover building was purchased by Rhythm Skate Shop as a new retail store in downtown, historic Houghton, Michigan. Division1 Design worked with a local engineering firm that specializes in restoration to development an updated design for the building's façade while still staying true to the local architecture. The design included new storefront windows with updated trim details and restoration of sandstone details

ENGINEERED TO ENSURE SUCCESS



OUR SERVICES

Pre-Planning
Feasibility Studies
Site Analysis
Permitting
Surveying
Environmental Planning
Zoning

ARCHITECTURAL DESIGN

Master Planning
Conceptual Renderings
Design Drawings
Construction Drawings

ENGINEERING

Geotechnical
Structural
Civil

SUSTAINABLE DESIGN

Green building design as
outlined by the U.S.
Green Building Council
Brownfield Assistance

CONSTRUCTION DOCUMENTATION

Drawings
Specifications
Proposal forms

CONSTRUCTION PROCEDURES

On-site QC Inspections
Submittal Review
As-built Drawings
Cost Review

PROPERTY SURVEYING

Land Divisions
- Lot Splits
- Site Condominiums
- Platted Subdivisions
ALTA Land Title Surveys
Mortgage Surveys
Legal Descriptions

DESIGN/ ENGINEERING SURVEYS

Topographic Surveys
- Site Design
- As built locations
Floodplain & Wetland
Mapping

STAKING

Site Grading
Underground Utilities
Building Layout
Roadway Staking
GPS Machine Control
- Terrain Model
Preparation
- Orientation and
initialization of machine
control equipment to site