

Designed to Deliver Satisfaction

Superior National Bank & Trust

Houghton, MI



SPECIFICATIONS:

Size: 2,400 sq. ft.

Completion: September 2007

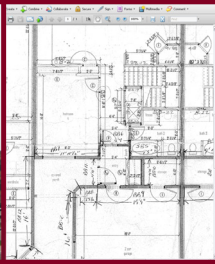
Contact: Willis Fontaine

Phone: (906) 482-0404

PROJECT DESCRIPTION:

Built as part of the Ridgecrest Plaza Retail Center, the Superior National Bank & Trust building was designed by Division1 Design. The Houghton branch of the Hancock, Michigan-based banking institution integrates many of the same design elements as Superior National Bank & Trust's other buildings for recognition of the Superior National brand. Division1 Design's plan allows for plenty of natural light in the lobby and teller area with large aluminum windows and high vaulted ceilings. The waiting area was designed to allow customers a space to relax and enjoy the warmth of an electric fireplace and television mounted above. A drive-through was incorporated into the design of the building and acts as a connection to the adjacent retail center, blending the two buildings together.

ENGINEERED TO ENSURE SUCCESS



OUR SERVICES

Pre-Planning
Feasibility Studies
Site Analysis
Permitting
Surveying
Environmental Planning
Zoning

ARCHITECTURAL DESIGN

Master Planning
Conceptual Renderings
Design Drawings
Construction Drawings

ENGINEERING

Geotechnical
Structural
Civil

SUSTAINABLE DESIGN

Green building design as outlined by the U.S. Green Building Council
Brownfield Assistance

CONSTRUCTION DOCUMENTATION

Drawings
Specifications
Proposal forms

CONSTRUCTION PROCEDURES

On-site QC Inspections
Submittal Review
As-built Drawings
Cost Review

PROPERTY SURVEYING

Land Divisions
- Lot Splits
- Site Condominiums
- Platted Subdivisions
ALTA Land Title Surveys
Mortgage Surveys
Legal Descriptions

DESIGN/ENGINEERING SURVEYS

Topographic Surveys
- Site Design
- As built locations
Floodplain & Wetland Mapping

STAKING

Site Grading
Underground Utilities
Building Layout
Roadway Staking
GPS Machine Control
- Terrain Model Preparation
- Orientation and initialization of machine control equipment to site