

War Memorial Medical Office Building

Sault Sainte Marie, MI



SPECIFICATIONS:

Size: 40,000 sq. ft.

Project Cost: \$8 million

Completion: June 2010

Contact: David Jahn, CEO War Memorial Hospital

Phone: (906) 635-4460

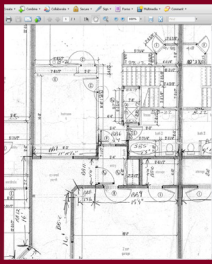
PROJECT DESCRIPTION:

Recognizing the need for additional medical office space, Division1 Design was selected as the design professional for the new medical office building located in downtown Sault Sainte Marie. Division1 Design worked in collaboration with War Memorial Hospital's interior buildout architect to design a building that blended the historical architecture of the area with the modern needs of medical professionals. Scheduled to be completed in June 2010, the 40,000 square foot, 4 story building has a framework of structural steel and precast concrete planks with a shell of metal studs, foam insulation, and brick veneer. The interior buildout work includes the construction of exam rooms, dialysis treatment areas, surgical units, nurses stations, reception areas, and individual offices.

Project Includes:

- Downtown project site
- New office space for staff
- X-ray room

ENGINEERED TO ENSURE SUCCESS



OUR SERVICES

Pre-Planning
Feasibility Studies
Site Analysis
Permitting
Surveying
Environmental Planning
Zoning

ARCHITECTURAL DESIGN

Master Planning
Conceptual Renderings
Design Drawings
Construction Drawings

ENGINEERING

Geotechnical
Structural
Civil

SUSTAINABLE DESIGN

Green building design as outlined by the U.S.
Green Building Council
Brownfield Assistance

CONSTRUCTION DOCUMENTATION

Drawings
Specifications
Proposal forms

CONSTRUCTION PROCEDURES

On-site QC Inspections
Submittal Review
As-built Drawings
Cost Review

PROPERTY SURVEYING

Land Divisions
- Lot Splits
- Site Condominiums
- Platted Subdivisions
ALTA Land Title Surveys
Mortgage Surveys
Legal Descriptions

DESIGN/ENGINEERING SURVEYS

Topographic Surveys
- Site Design
- As built locations
Floodplain & Wetland Mapping

STAKING

Site Grading
Underground Utilities
Building Layout
Roadway Staking
GPS Machine Control
- Terrain Model Preparation
- Orientation and initialization of machine control equipment to site